



**MECHANICAL TECHNOLOGY SYSTEMS**

*Let's be partners*

# MECHANICAL TECHNOLOGY SYSTEMS INDUSTRIAL SOLUTIONS

## The Company

MTS emerged derived from the international growth of the industrial sector of Pinto Brasil Group.

Seeks to develop strategic markets in a constant commitment to customer partnership, through the local development of technical and commercial activity, manufacturing solutions and technical assistance.

This strategy allows maximum reactivity to all requests required by customers, thus allowing the search for excellence of service.

More than one supplier, MTS seeks to be a partner in your business!

To ensure a complete quality service, MTS performs the entire process of planning and building development the final product and is produced according to the specifications provided by the customer.

6 R&D engineers  
35 project engineers  
9 electronics engineers

Design software:  
Catia | Solid Works | Inventor

- Strong engineering department with high skills and capabilities as well as experience on machine projects and development (mechanical, electric and hydraulic, automation and product engineering).



## Internacionalization

Headquartered in Portugal, MTS is present in many countries, thus demonstrating its potential as a supplier of industrial machines and peripherals of some leading companies.

The international presence is justified by the warranty that assures quality service and having an adequate capacity to respond to the needs of its multinational customers.

Thus seeks to be present close to its customers in order to ensure the quality of products and services efficiently.

### Portugal

Germany | Spain | Morocco | Mexico | Romania | Russia | Tunisia

## Customer Dedication

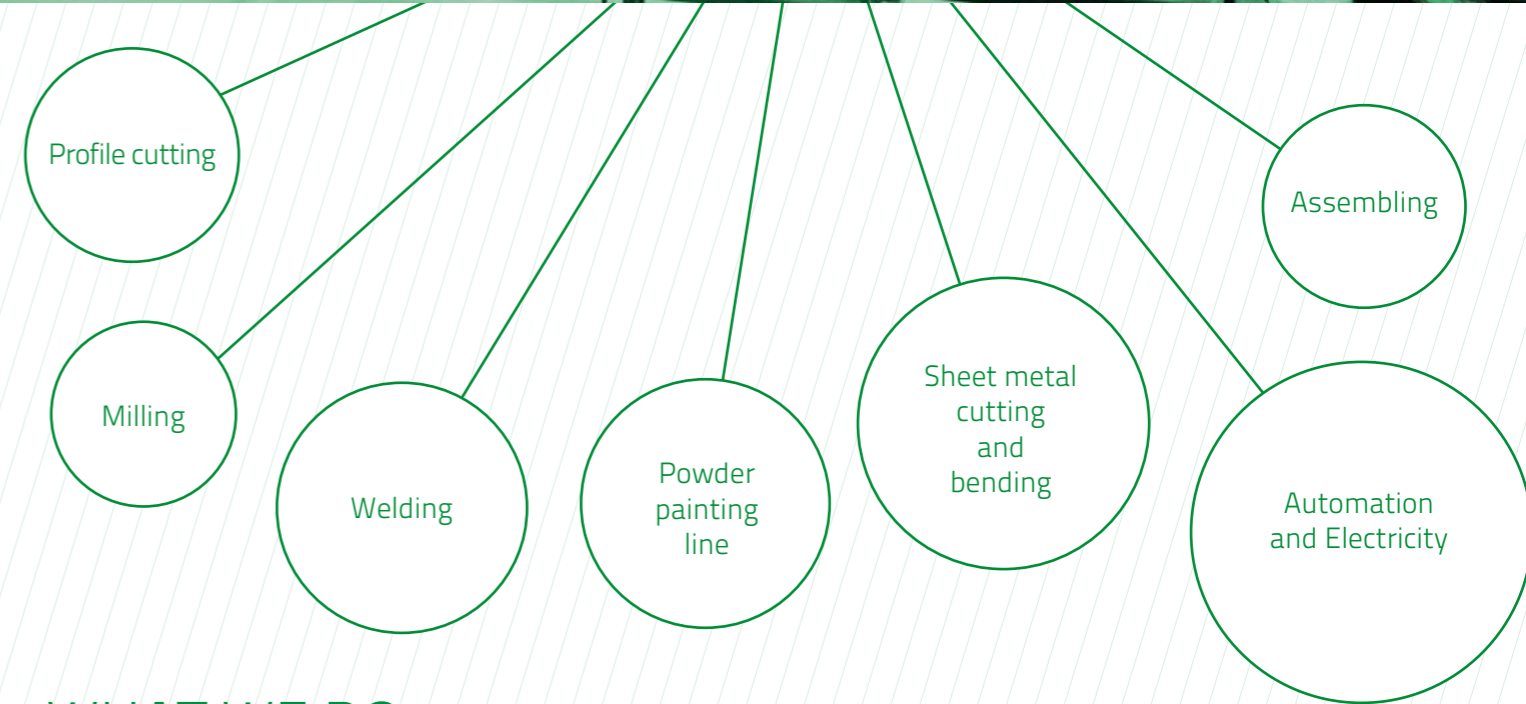
MTS has targeted a balanced evolution between financial strength, profitability, growth, operational efficiency and social responsibility, with a permanent customer service and optimize the quality of service being provided. It privileges the solidity, rigor in the management and efficiency in the functioning, these values that guide the actions of MTS and acquire greater relevance, reflecting the importance the permanent protection of the interests of their clients.

- Headquarters ●
- Production and Services ●
- Sales and Services ○



Guaranteed  
★ ★ ★ ★ ★  
**Highest Quality**  
by  
**MTS**

Production areas



## WHAT WE DO

### PRODUCTION SYSTEMS

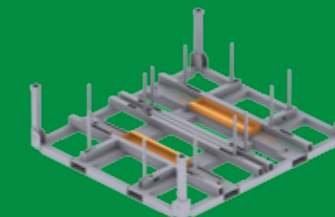
The production systems, strongly oriented to the automotive industry, are equipment and peripherals according to specifications of each customer to guarantee effectively the goals established production. There is a diverse range of products, particularly for the manufacture of wire harness, which ensured full compliance with customer's needs. Are always guaranteed quality standards and safety requirements.

### LOGISTIC SYSTEMS

Through sustained growth in this segment and always with a view to developing value-added solutions, develops various logistics solutions (packaging, supply, transfer and transport) to ensure compliance with the required specifications. Are solutions that meet varying customer specific needs and can be applied in various products, and are now largely associated with logistics operations of automotive parts and components.

### PIBRA-EASYFORM SYSTEMS

Due to the high need for operations changes, which leads to certain structures that often needs to undergo changes due to other specifications required at the time, promoted the Lean systems that are modular structures that ensure high levels of flexibility, both by reforming the structure (clamping systems by unions) as the reuse of the material. Appear from a perspective of providing the customer simple, flexible and adjustable structures, to the momentary need of the client, while ensuring the exact fulfillment of their needs.





# MECHANICAL TECHNOLOGY SYSTEMS INDUSTRIAL SOLUTIONS

## The Company

MTS emerged derived from the international growth of the industrial sector of Pinto Brasil Group.

Seeks to develop strategic markets in a constant commitment to customer partnership, through the local development of technical and commercial activity, manufacturing solutions and technical assistance.

This strategy allows maximum reactivity to all requests required by customers, thus allowing the search for excellence of service.

More than one supplier, MTS seeks to be a partner in your business!

To ensure a complete quality service, MTS performs the entire process of planning and building development the final product and is produced according to the specifications provided by the customer.

6 R&D engineers  
35 project engineers  
9 electronics engineers

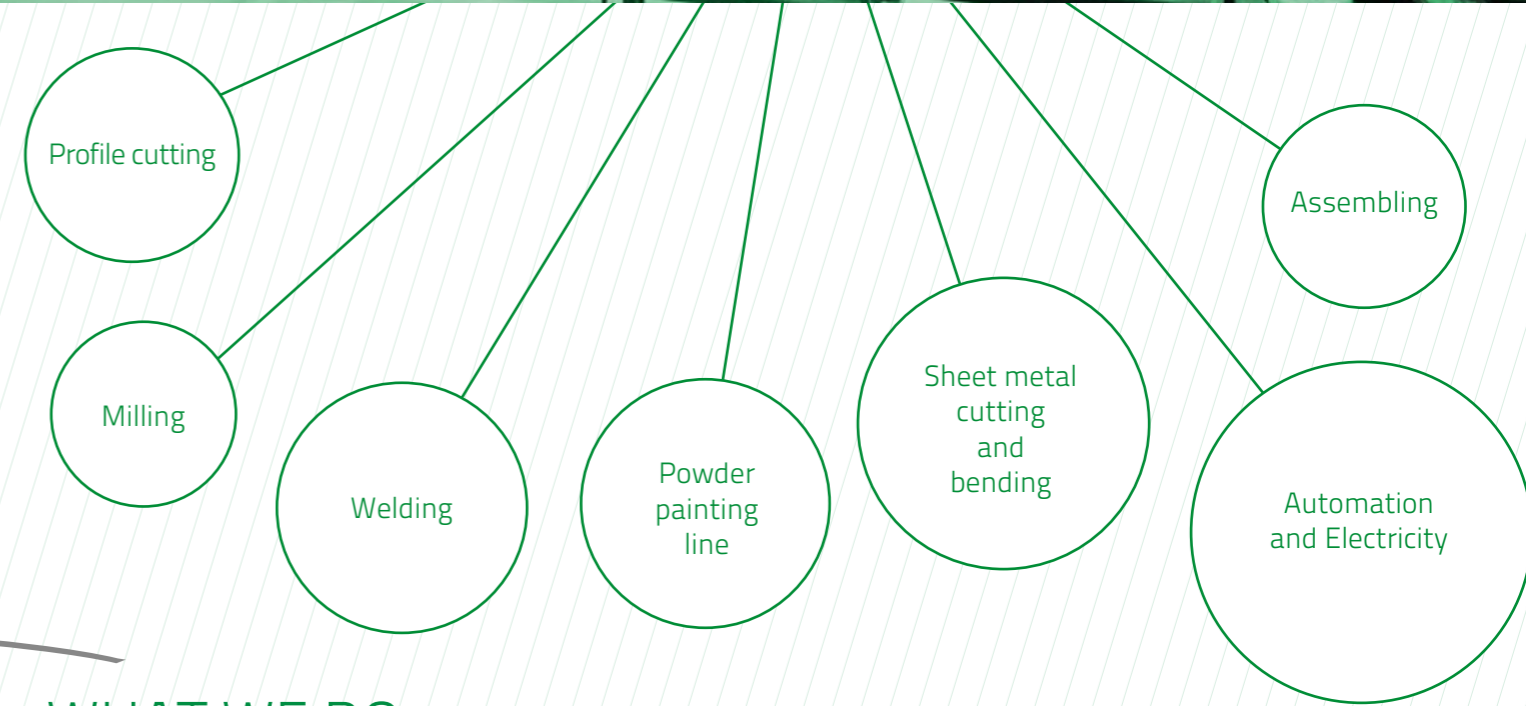
Design software:  
Catia | Solid Works | Inventor

- Strong engineering department with high skills and capabilities as well as experience on machine projects and development (mechanical, electric and hydraulic, automation and product engineering).



Guaranteed  
★ ★ ★ ★ ★  
Highest Quality  
by  
MTS

Production areas



## WHAT WE DO

## Internacionalization

Headquartered in Portugal, MTS is present in many countries, thus demonstrating its potential as a supplier of industrial machines and peripherals of some leading companies.



### AERONAUTICS

Allied to the "know-how" acquired in the automotive sector, Divmac with a view to diversifying sectors, has continuously been developing products and solutions for high tension according to standard Pr-EN2283. Only a strong knowledge and extensive experience in the design and manufacture of equipment allows Divmac meet the needs of its customers.

### AUTOMOTIVE

Divmac developed valences that allow the design of innovative solutions, focused on fulfilling customer needs with a view to increasing the effectiveness and efficiency of manufacturing processes as well as quality assurance. Presents a diverse range of products, particularly for the control of quality, thus ensuring full compliance with customer requirements.

### CUSTOMIZED SOLUTIONS

Divmac has a strong team of design and product development, with a "Know-How" high in many areas of engineering. Through strong capabilities in developing customized solutions, their products are designed according to the need of customers, being applicable both to manufacture parts and components as quality control after processing.

### ARTIFICIAL VISION

Based on sustained growth and a general increase of experience in other sectors, Divmac by a set of specific customer needs, develops software and hardware solutions for control by artificial vision, being applicable to many segments of industrial activity, since detection of components, until color detectors or LCD analysis.

## Innovation and Growth

Continuous innovation infrastructure and technological resources aims to increase competitiveness and improve product quality and service.

MTS focuses on quality of its products and ensures reliability.

The investment in the creation of new products and technology, without ever losing sight of our commitment to quality and tradition, makes MTS a solid and reputable partner in your area of expertise.

Only on customer satisfaction and commitment to innovation is possible, for MTS, maintain the loyalty and trust of its customers.

These are the pillars that guarantee respect for their partners and ensure the satisfaction of their needs.

Let's be partners!

### Cust

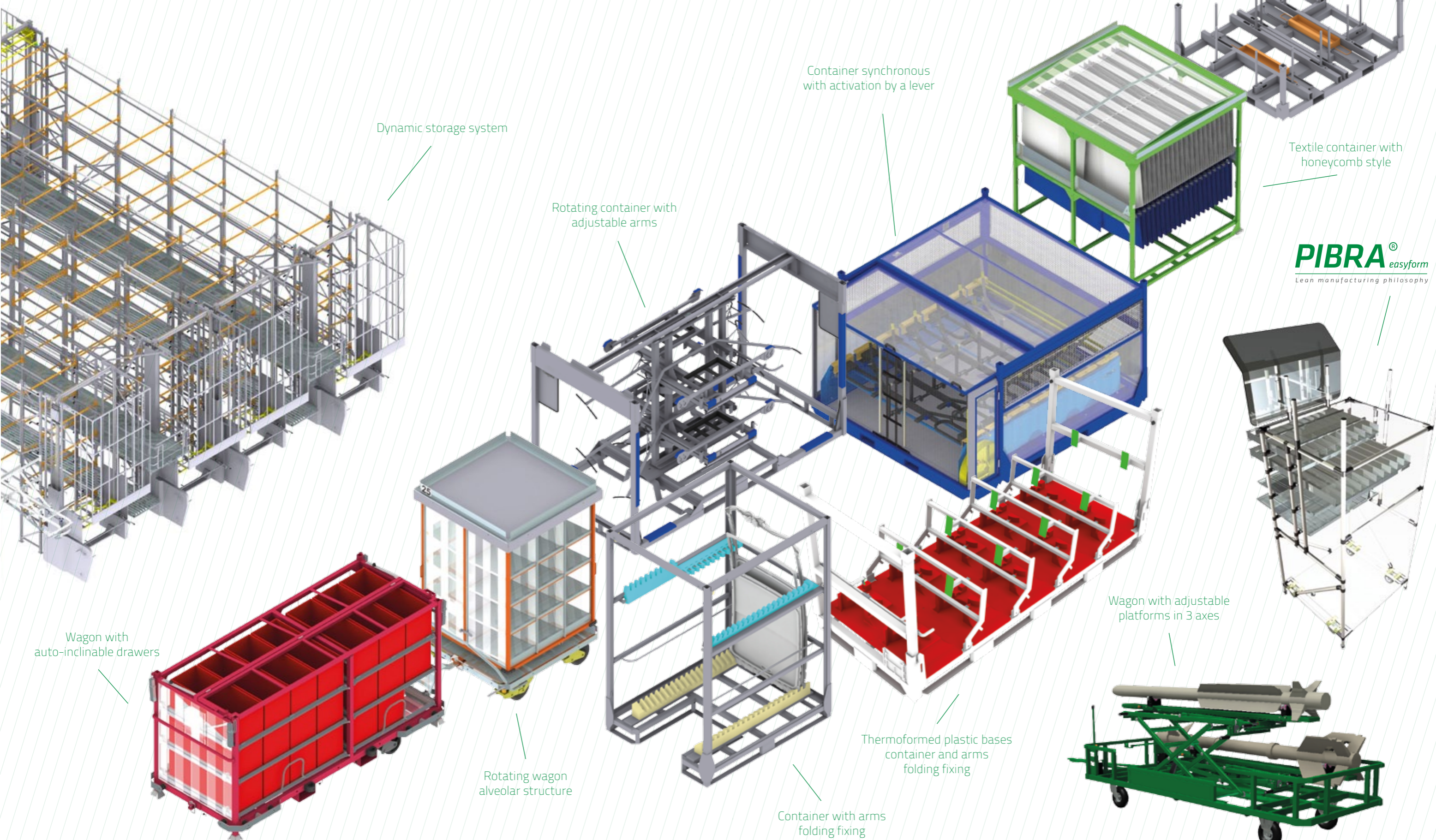
MTS h  
operat  
optim  
manag  
MTS a  
of the

MTS





# MAXIMUM QUALITY LOGISTIC SYSTEMS



Dynamic storage system

Rotating container with adjustable arms

Container synchronous with activation by a lever

Transport base with removable stops

Textile container with honeycomb style

**PIBRA®** *easyform*  
Lean manufacturing philosophy

Wagon with auto-inclinable drawers

Rotating wagon alveolar structure

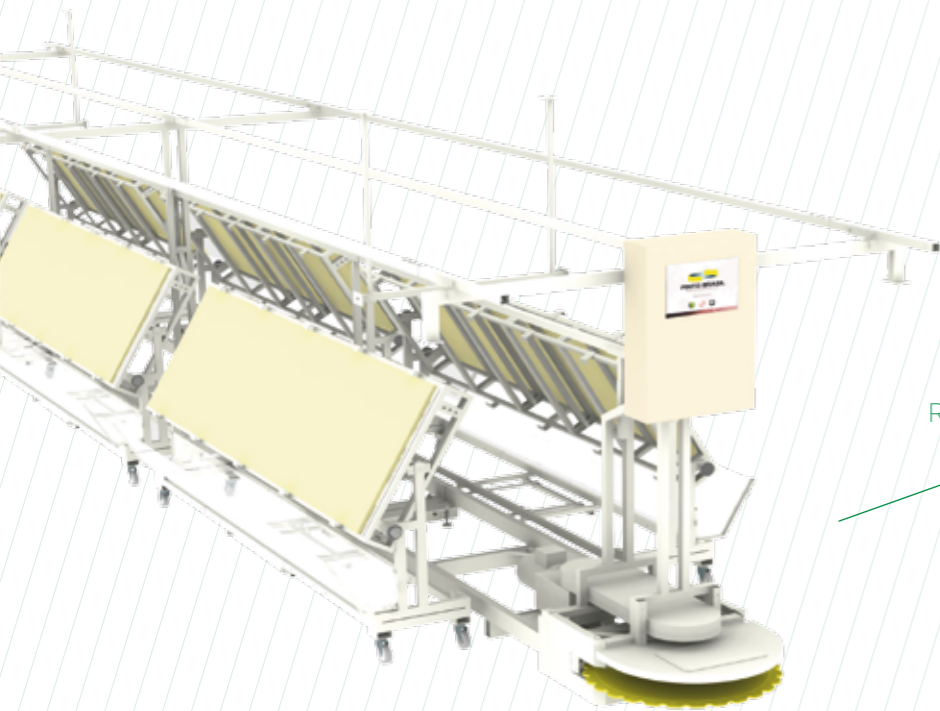
Thermoformed plastic bases container and arms folding fixing

Container with arms folding fixing

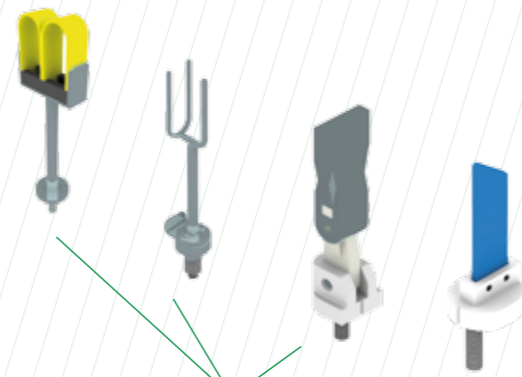
Wagon with adjustable platforms in 3 axes



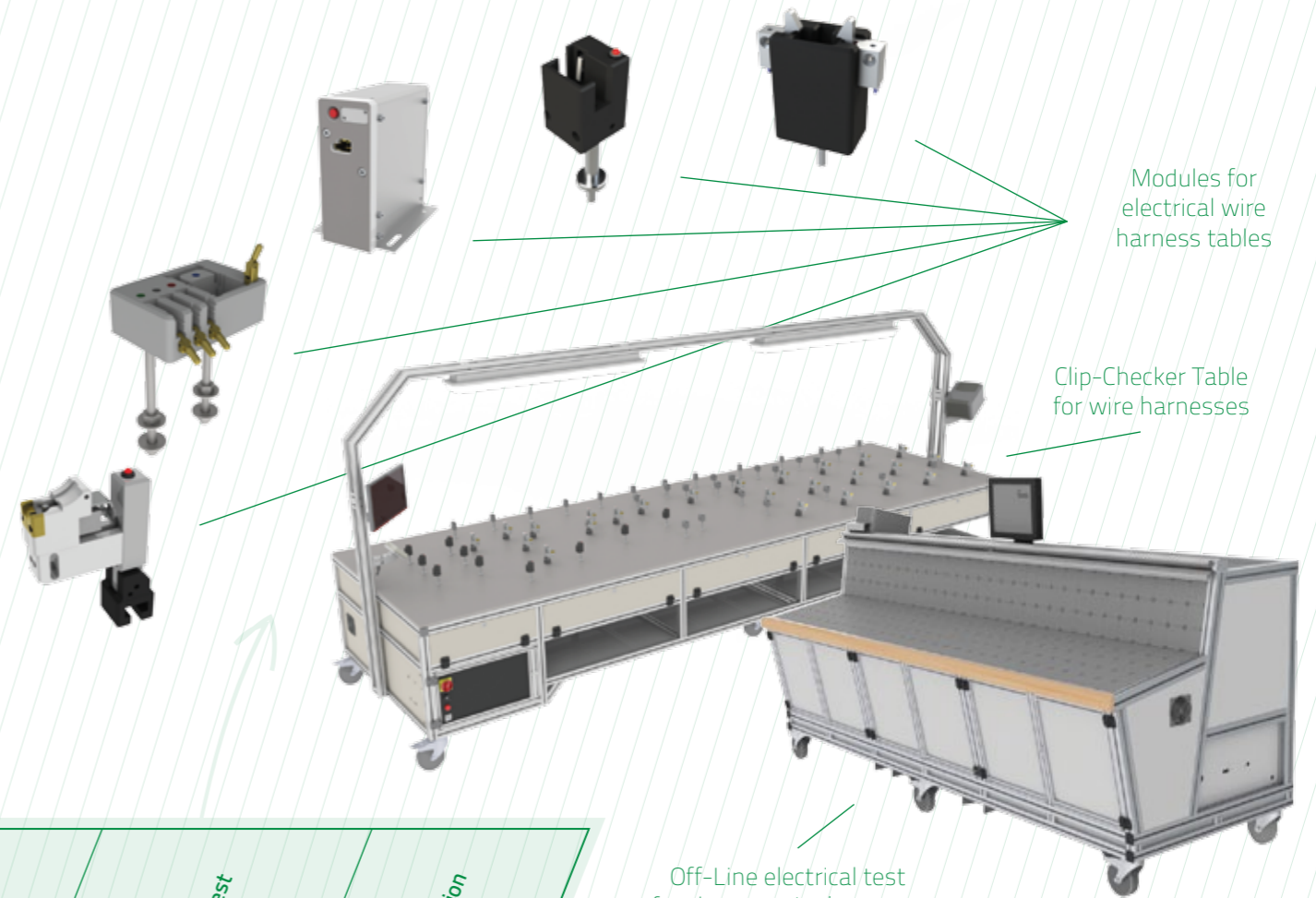
# MAXIMUM QUALITY PRODUCTION SYSTEMS



Rotary Assembly Line



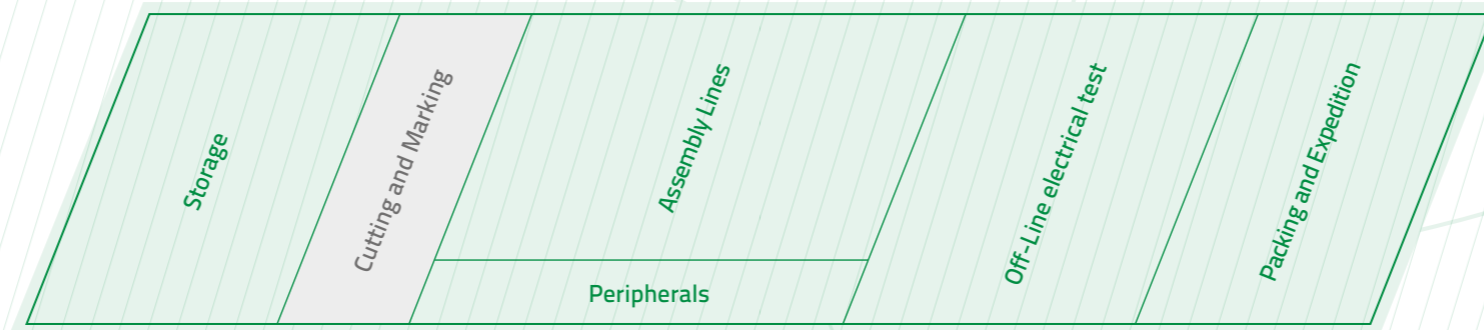
Components to aid assembly of electrical wire harnesses



Modules for electrical wire harness tables

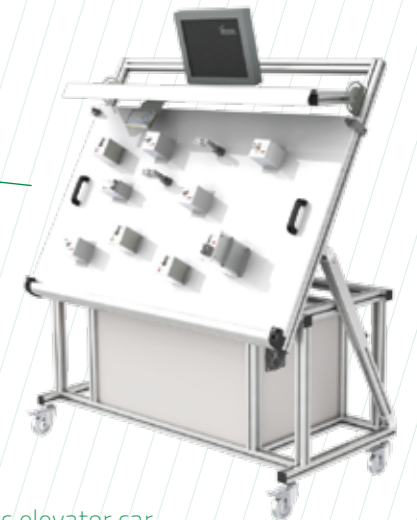
Clip-Checker Table for wire harnesses

Semi-automatic shelf storage and supply of materials



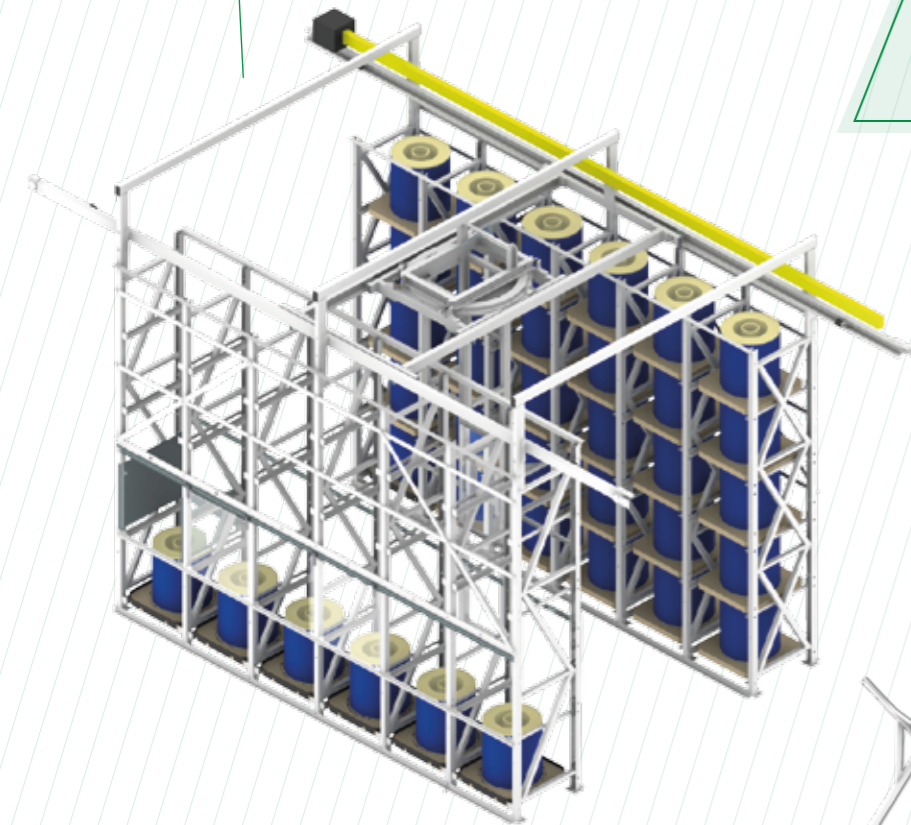
Off-Line electrical test of 2 plans to wire harnesses

Off-Line electrical test to integral production of wire harnesses



Specific workstation with Easyform structure

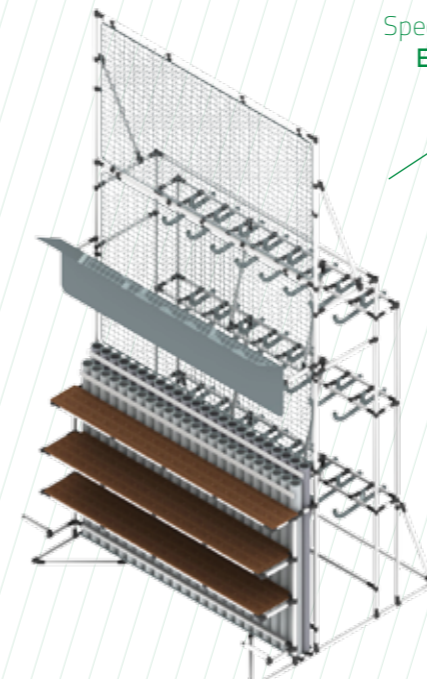
Specific elevator car



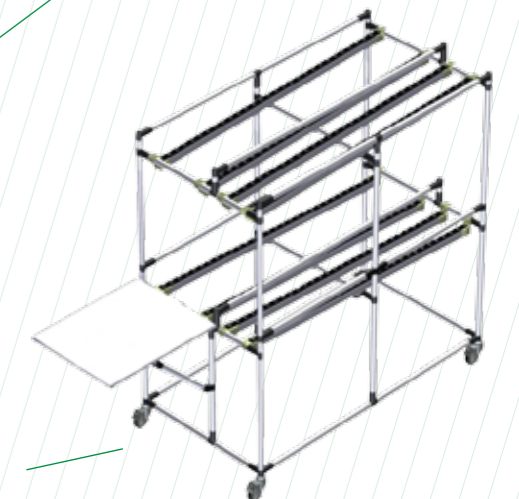
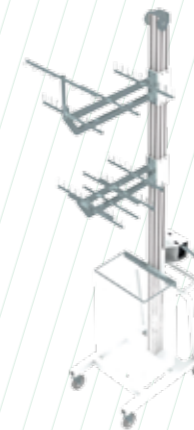
Specific transport car



Manipulator with three-dimensional movement



Dynamic rack in Easyform structure



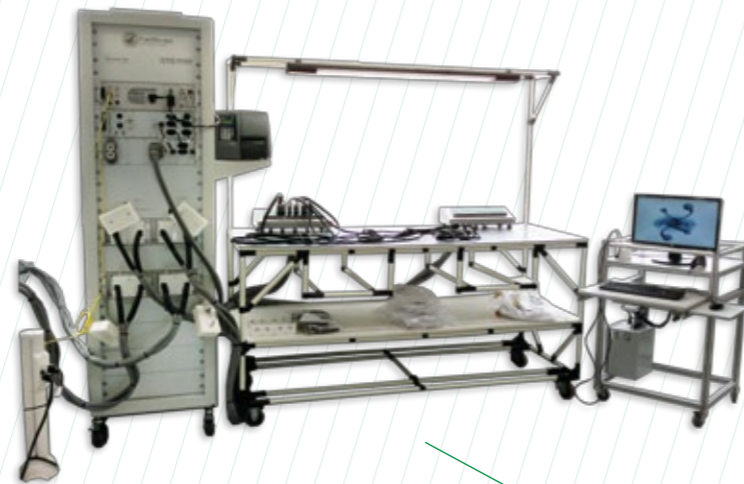


# MAXIMUM QUALITY AERONAUTICS AND ARTIFICIAL VISION

Electrical and functional testing table for high tension

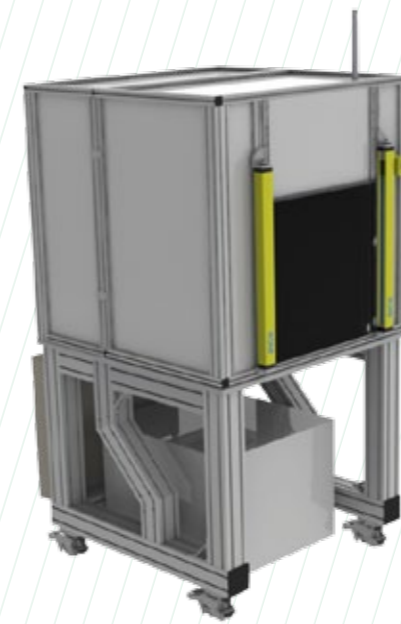


Electrical testing table for high tension wiring helicopters



Software Moncab / Edcab for high tension test

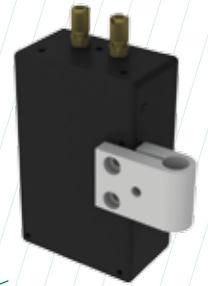
Electrical test line for high tension wiring helicopters



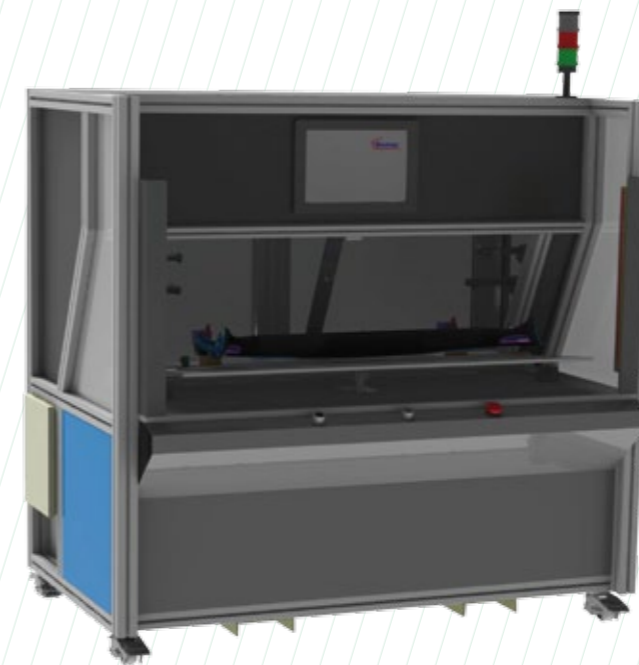
Equipment for control of correct assembly of components



Test of presence of fuses and relays for camera



Polychromatic components detector



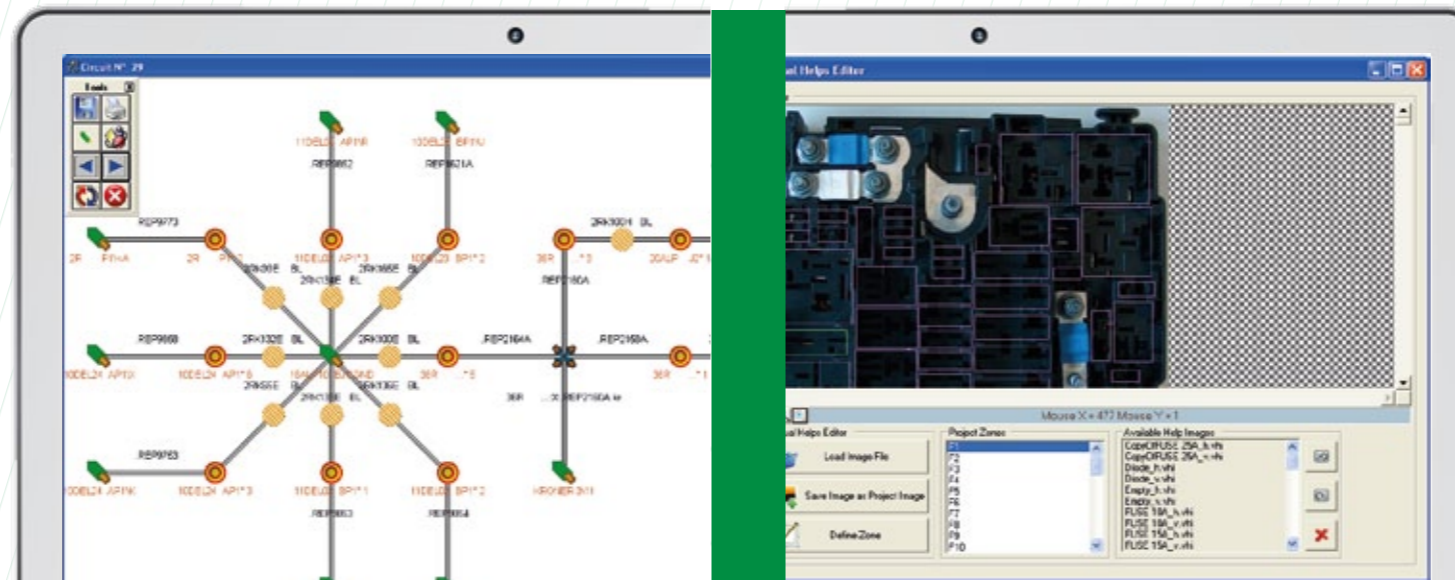
Equipment for testing angle of view LCD



Equipment check for components



Electrical modules for wire harness test



Software to inspect components by artificial vision



# MAXIMUM QUALITY CUSTOMIZED SYSTEMS



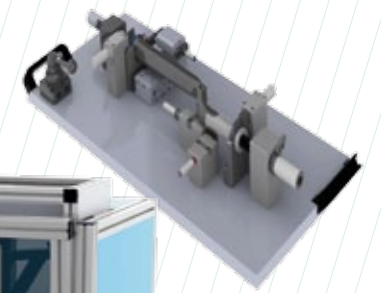
Equipment for cutting and drilling panels

Ultrasonic welding equipment for metals

Ultrasonic welding equipment for textiles

Assembly workstation for placing rivets with movements in XYZ axes

Mechanical caliber for dimensional control

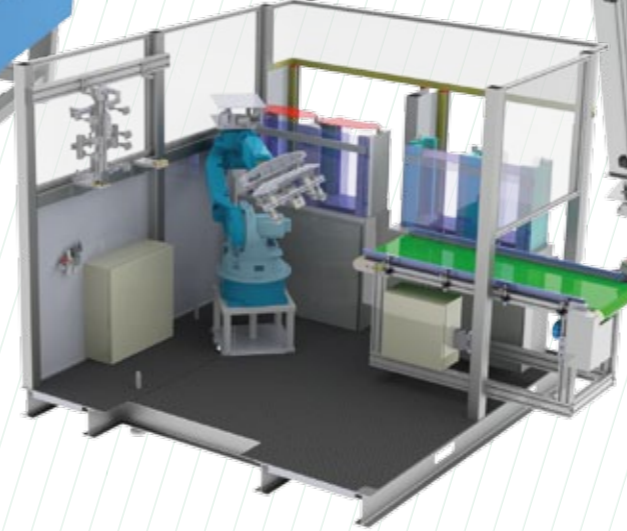


Ultrasonic welding equipment for plastics

Equipment for electrical testing



Equipment type assembly, ultrasonic welding and airbag verification



Equipment for placing lockets tissue in injection mold

Equipment for assembling components into finished pieces

Control equipment components with bilateral use



